

# *Bristol* C A B I N E T R Y



**BRISTOL U.S.A.**

U.S.A. Based Casework Product Line



---

**BRISTOL INTERNATIONAL**

Globally Sourced Product Lines





## WHY BRISTOL

Bristol Cabinetry has developed an exclusive relationship with a U.S. based manufacturing company and has launched a national initiative to provide Development and General Contracting companies casework products at a very aggressive and competitive price point. Our customers in search of a U.S. product that can now be competitive with Asia have that option.

We provide the service, delivery, and follow up in a real time basis. All deliveries will be overseen by our project managers and all packaging is done to the highest standards to avoid problems in the process. Products can now be delivered on a 6-8 week turn around and spare parts within the same week if needed.

Bristol services our clients Nationally and works with Developers and General Contractors delivering high quality services with our product lines.

A few of those include:



PLEASE VISIT OUR WEBSITE  
[WWW.BRISTOLCABINETRY.COM](http://WWW.BRISTOLCABINETRY.COM)

## SERVICES

We understand that every new project has a vision. Kitchens and bathrooms are integral parts of making this vision a reality. These are areas where the team at Bristol can help our customers earn a greater return on their investment. We also understand that the ability to meet tight deadlines and budgets are equally as important in every multi family project. Bristol Design Group will help you achieve these goals through our dedication to providing our customers with the finest products and services.

### Our Services include

**SOURCING:** An important service which we provide for our customers is our sourcing of the best products from around the world. Understanding the industry's evolving needs and the importance of an American made product have led us to an exclusive national relationship with a domestic partner that provides high-quality cost-effective cabinetry for our customers. In addition to our Bristol Cabinetry line made in the USA, we offer some of the most comprehensive product lines in the industry – all globally sourced from the most forward-thinking and quality-driven manufacturers to ensure our customers receive the best quality at the most competitive prices.

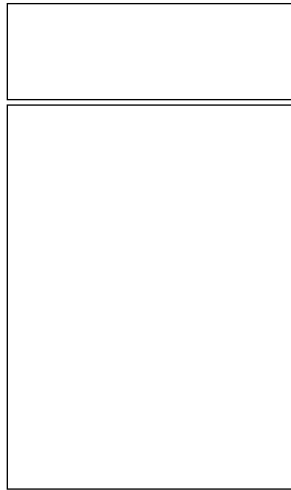
**DESIGN SERVICES:** Our team of Designers approach each project holistically, leveraging the team's diverse cross-product experience and extensive knowledge to deliver custom design services that extend beyond cabinetry. Our passion for all aspects of design keeps us on top of current trends in Kitchen and Bath. This enables us to be ahead of the curve when it comes to predicting future trends and helping our customers remain relevant for years to come.

**VALUE ENGINEERING:** At Bristol, our knowledge of the Kitchen and Bath industry along with our vast array of cabinetry products put us in the unique position of being able to help our customers' vision become a reality. Our team of designers thoroughly evaluate every project, often presenting minor changes or options that can have a big impact on the budget. We aim to offer our customers every possible opportunity for cost savings while maintaining the design integrity of the project.

**PROJECT MANAGEMENT:** Our commitment to our customer doesn't end once cabinets are purchased. We assign a team of highly trained project managers with extensive experience to each project to assist and manage every detail from shop drawings to ordering and delivery thru final punch list. Our project managers are detail-focused and proactive, adept at foreseeing and offering solutions to potential problems that could cost the project time and money.

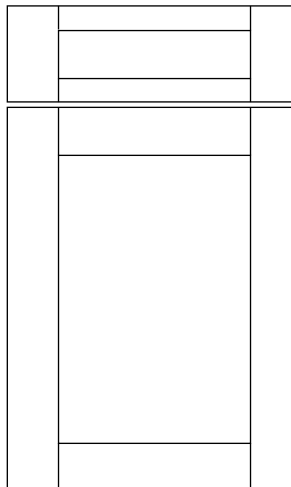
### TFL FLAT PANEL DOOR STYLE

All doors to be  $\frac{3}{4}$ " material with 1mm PVC edgebanding.  
Grain direction on door and drawer fronts to be vertical non-matching

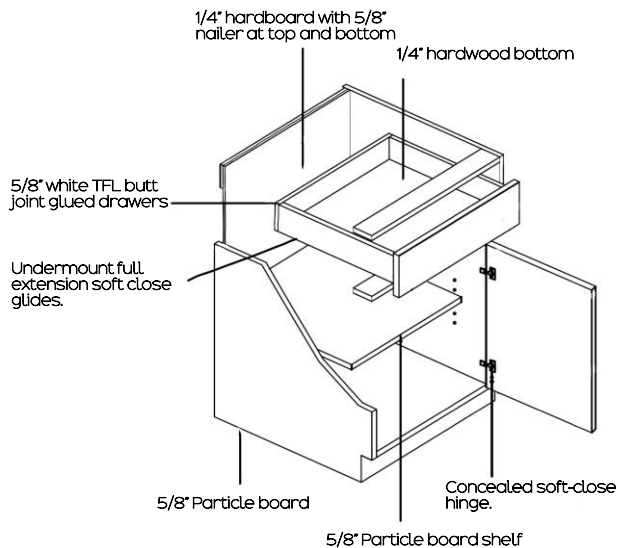


### TFL 5 PIECE SHAKER DOOR STYLE

5-piece Shaker doors are a line of TFL wrapped door and drawer fronts that emulate the look of real wood doors, featuring multi directional grain. With mortise and tenon construction, stiles and rails are glued and clamped around a center  $\frac{1}{4}$ " flat panel.



# BRISTOL U.S.A.



## STANDARD TFL COLORS



5-PIECE TFL DOOR AVAILABLE

BRISTOL U.S.A.  
MANUFACTURING FACILITY



NORTH CAROLINA

BRISTOL U.S.A.  
MANUFACTURING FACILITY



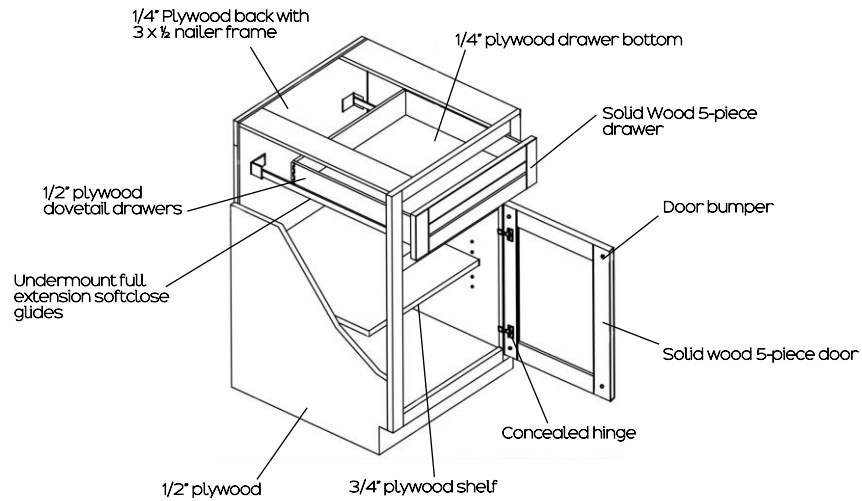


BRISTOL U.S.A.  
MANUFACTURING FACILITY



# BRISTOL VIETNAM

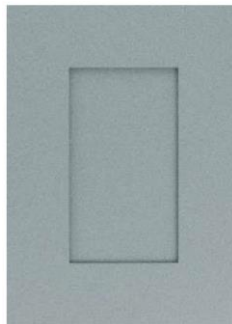
## FRAMED



## STANDARD COLORS



SW  
Shaker White



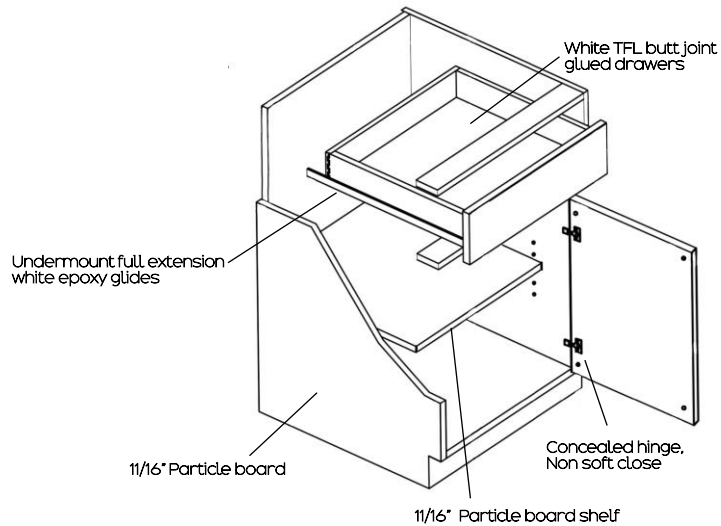
SG  
Shaker Gray



SE  
Shaker Espresso

# BRISTOL VIETNAM

## FRAMELESS



SEE SWATCHES FOR AVAILABILITY



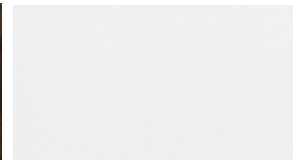
HZ-2016



HZ-7078



HZ-7067



HZ-7004



HZ-7027



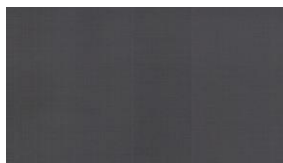
HZ-7062



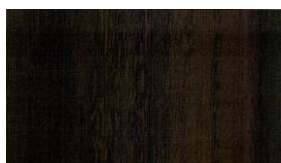
HZ-1916



HZ-1961



HZ-7002



HZ-2020



HZ-2002



HZ-2018



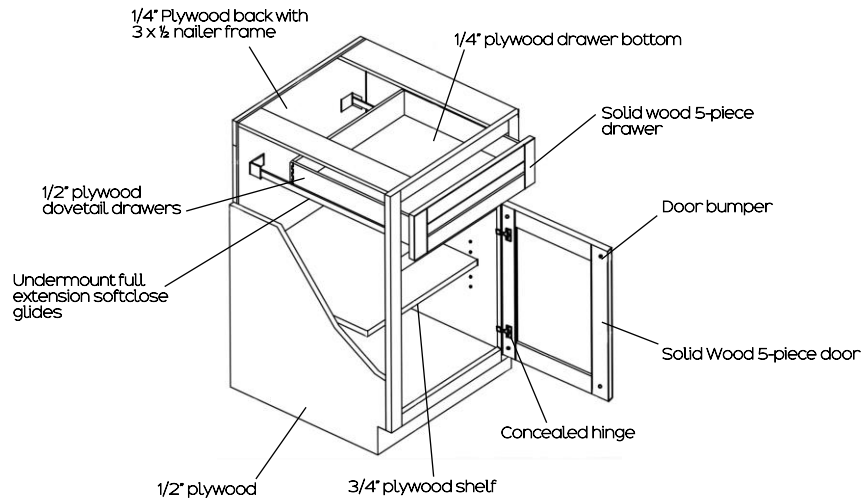
HZ-7063



HZ-1921

# BRISTOL MALAYSIA

## FRAMED



### STANDARD COLORS

see brochure for additional styles



Door No: S10



Door No: S17



Door No: S11



Door No: S7



Door No: S4



Door No: S2R

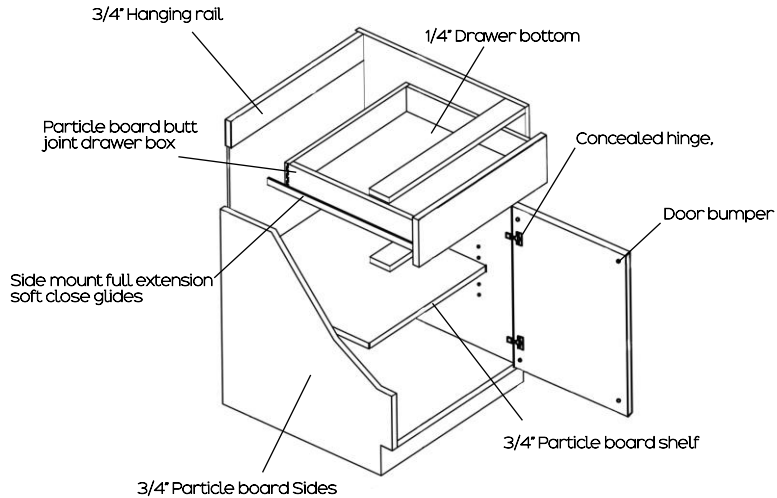


Door No: S2



# BRISTOL MALAYSIA

## FRAMELESS



SEE SWATCHES FOR AVAILABILITY



870-30



870-11



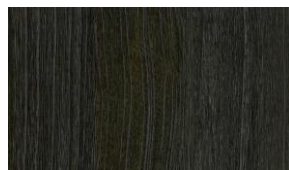
870-073



870-305



870-193



870-40



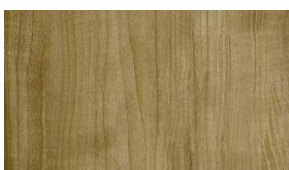
870-22



870-161



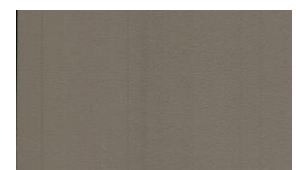
870-29



870-37



870-12



870-06



870-05



870-114

# BRISTOL CHINA

## FRAMED

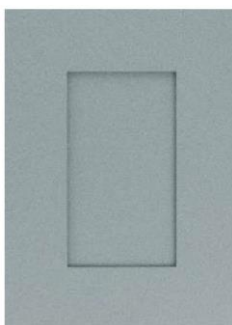


- ❶ Full overlay panel, ¾ inch thick solid wood
- ❷ Bracket reinforcements for base cabinet
- ❸ 6-way adjustable European-style hinge with soft-close feature
- ❹ Dovetail drawers with solid wood on all sides, full extension
- ❺ Concealed Under-mount full extension drawer glides with soft-close feature
- ❻ ½ inch cabinet-grade plywood box, UV coated natural plywood on interior
- ❼ Double-doweled face frame joint
- ❽ Hardwood face frame
- ❿ Door bumpers

## STANDARD DOORS & COLORS



SW  
Shaker White



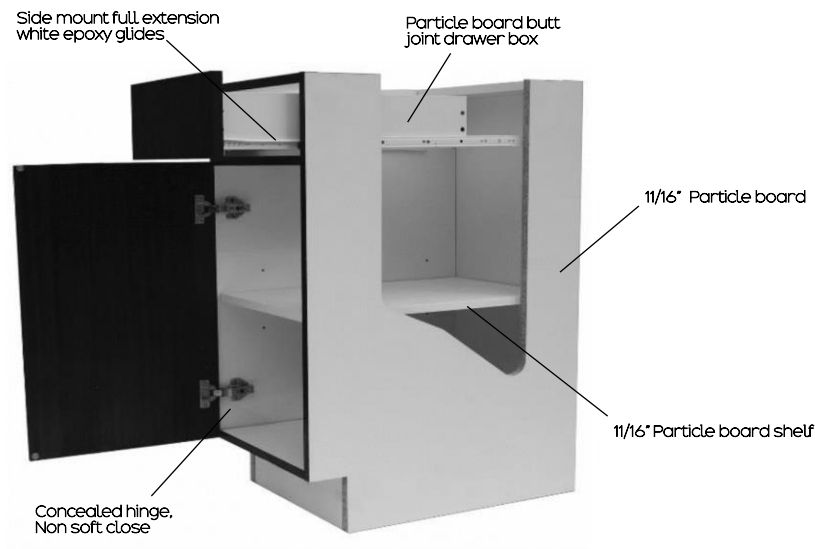
SG  
Shaker Gray



SE  
Shaker Espresso

# BRISTOL CHINA

## FRAMELESS

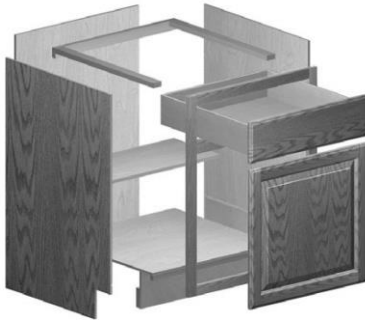


SEE SWATCHES FOR AVAILABILITY



# K W P

## Base Cabinet Specifications - STANDARD & DOMESTIC



### Cabinet Fronts

- ¾" solid wood
- Front stiles are pocket drilled and assembled with 1¼" screws for rugged durability

### Side Panels

- ¾" particle board
  - DOMESTIC option: ¾" plywood
  - Vinyl covered on both sides
- Glued and stapled in a ¾" dado in the cabinet's front frame

### Back Panels

- ¾" particle board
  - DOMESTIC option: ¾" plywood
  - Vinyl covered on inside ONLY
- Glued and nailed in ¾" dado and stapled to the hang rail and cabinet bottom

### Floor Panels

- ¾" particle board
- DOMESTIC option: ¾" plywood
- Vinyl covered on inside ONLY

### Hanging Rails

- ¾" x 1½" all wood
- Installed on sides and back

### Toe Kick

- 4½" high x 4" deep

### Shelves

- Fixed ½" MDF
- DOMESTIC option: Fixed ½" plywood
- Bullnose, foil-covered front edges

### Drawers

- ½" MDF
- NOTE: Cabinets 27" - 36" W use ½" finished solid wood
- DOMESTIC option: 1/2" finished solid wood
- Bullnose, foil-covered top edges
  - Dovetail construction standard
  - Drawers glide smoothly on self-adjusting ball bearing nylon guides

### Doors

- Butt Doors: Standard on 24" - 36" W cabinets

## STANDARD DOORS & COLORS

Classic



Georgetown



Jamestown



Mission



Rentown



Auburn



Autumn



Cinnamon



Coffee



Farmhouse  
Blue



Lava



Limestone



Natural



Onyx



Pearl



Sandstone



Slate



White

Check brochure for availability



FRAMED		U.S.A.	CHINA	MALAYSIA	VIETNAM	K W P
<b>BOX CONSTRUCTION</b>						
	1/2" PLYWOOD BOX		✓	✓	✓	
	3/8" PARTICLE BOARD BOX					✓
	5/8" PARTICLE BOARD BOX					
<b>DRAWER BOX</b>						
	1/2" MDF					✓
	1/2" PLYWOOD DOVETAIL		✓	✓	✓	
	1/2" MAPLE DOVETAIL					
<b>DRAWER GLIDES</b>						
	SIDE MOUNT EPOXY COATED					
	SIDE MOUNT/SOFT CLOSE					✓
	UNDERMOUNT/FULL EXTN/SOFTCLOSE		✓	✓	✓	
<b>BASE SHELF</b>						
	FULL DEPTH					
	HALF DEPTH		✓	✓	✓	✓
<b>SHELF THICKNESS</b>						
	1/2" MDF					✓
	3/4" PLYWOOD		✓	✓	✓	
	5/8" PARTICLE BOARD					
<b>HINGES</b>						
	NON SOFT CLOSE					
	SOFT CLOSE		✓	✓	✓	✓
<b>PAINTED FINISHES</b>						
	WHITE		✓	✓	✓	✓
	GREY		✓	✓	✓	✓
<b>STAINED FINISHES</b>						
	AVAILABLE		✓	✓	✓	✓
<b>FINISHED SIDES</b>						
	STANDARD		✓	✓	✓	✓
	AVAILABLE					
<b>ADA</b>						
	AVAILABLE		✓	✓	✓	✓

FRAMELESS		U.S.A.	CHINA	MALAYSIA	VIETNAM	K W P
<b>BOX CONSTRUCTION</b>						
	1/2" PLYWOOD BOX					
	3/8" PARTICLE BOARD BOX					
	5/8" PARTICLE BOARD BOX	✓	✓	✓	✓	
<b>DRAWER BOX</b>						
	5/8" BUTT JOINT GLUED	✓		✓	✓	
	1/2" PLYWOOD DOVETAIL					
	1/2" MAPLE DOVETAIL		✓			
<b>DRAWER GLIDES</b>						
	UNDER MOUNT WHITE EPOXY FULL EXTN					
	SIDE MOUNT/SOFT CLOSE			✓	✓	
	UNDERMOUNT/FULL EXTN/SOFTCLOSE	✓	✓			
<b>BASE SHELF</b>						
	FULL DEPTH					
	HALF DEPTH	✓	✓	✓	✓	
<b>SHELF THICKNESS</b>						
	3/4" PARTICLE BOARD		✓	✓	✓	
	3/4" PLYWOOD					
	5/8" PARTICLE BOARD	✓				
<b>HINGES</b>						
	NON SOFT CLOSE			✓	✓	
	SOFT CLOSE	✓	✓			
<b>EDGE BAND THICKNESS</b>						
	0.5mm					
	1.0mm	✓	✓	✓	✓	
	1.5mm					
<b>TFL FINISHES</b>						
	SOLID COLORS	✓	✓	✓	✓	
	TEXTURED WOODGRAIN	✓	✓	✓	✓	
	5-PIECE TFL	✓				
<b>FINISHED SIDES</b>						
	STANDARD		✓	✓	✓	
	AVAILABLE	✓				
<b>ADA</b>						
	AVAILABLE	✓	✓	✓	✓	





870 W DIVISION ST  
UNIT E  
CHICAGO, IL 60642

312.266.2341

[WWW.BRISTOLCABINETRY.COM](http://WWW.BRISTOLCABINETRY.COM)